

 Mumbles<sup>®</sup>





Mumbles toys are a world of soft plush fur, lovingly designed to be decorated and personalised for the gifting market.

PRINT ME'S: Page 4

ZIPPIES: Page 6

FESTIVE: Page 8

COMFORTERS & BLANKETS: Page 10

TRADITIONAL BEARS: Page 12

ACCESSORIES & CLOTHING: Page 13

DECORATING TIPS: Page 14

SIZES: Page 15

All Mumbles are tested and comply to EN71 to Toy Safety regulations and present CE and UKCA markings on all labels, this means the toys undergo rigorous testing to ensure that the products are safe for the use of children and free from choking hazards.

The majority of our toys are suitable for all ages, refer to age listed on each product.

When personalisation is added, it should be ensured that these remain suitable for all ages due to the variety of decoration materials available, however they will be suitable for over 36 months.



MM052 PG6 + MM060 PG4



MM023 PG13



MM579 PG6 + MM060 PG5



MM060 PG5



MM573, MM567, MM560, MM563 + MM566 PG9



MM564 PG7, MM580 PG6, MM569 PG7, MM572 PG7, MM558 PG7 + MM060 PG4





PRINT ME'S ARE MADE WITH A FLATTER, 100% POLYESTER FUR PILE ON THE TUMMY FOR DIRECT PRINTING AND SUBLIMATION PRINTING. SUITABLE FOR ALL AGES.



LAMB  
23cm | 0+



COW  
21cm | 0+



CAT  
22cm | 0+



DOG  
22cm | 0+



KANGAROO  
23cm | 0+



KOALA  
26cm | 0+



HIGHLAND COW  
23cm | 0+



ORGANGUTAN  
21cm | 0+



WHITE BUNNY  
22cm | 0+



BLUE BUNNY  
22cm | 0+



PINK BUNNY  
22cm | 0+



GREY BUNNY  
22cm | 0+



WHITE TEDDY  
24cm | 0+



BLUE TEDDY  
24cm | 0+



PINK TEDDY  
24cm | 0+



UNICORN  
22cm | 0+



GIRAFFE  
22cm | 0+



LION  
22cm | 0+



ELEPHANT  
22cm | 0+



SLOTH  
23cm | 0+



OWL  
24cm | 0+



TEDDY  
22cm | 0+



DRAGON  
23cm | 0+



RAINBOW BEAR  
24cm | 0+

MM060 PINK, BLUE + WHITE TEDDY



MM061  
ECO POLAR BEAR  
22cm | 0+





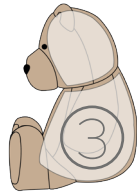
The full Zippies range is designed with a zip around the base and are stuffed with sealed, removable pads to allow for direct embroidery and printing. The stuffing has 3 different variations depending on the design of the toy, each style is listed with the relevant code.



1 PAD, ONLY BODY STUFFING, HEAD IS FIXED



1 PAD, BODY AND HEAD STUFFING



2 PAD, SEPARATE BODY AND HEAD STUFFING



MM550 65cm|0+ ①



MM574 33cm|0+ ②



MM575 35cm|0+ ①



MM580 33cm|0+ ②



MM565 33cm|0+ ②



MM050 45cm|0+ ①



MM050 34.5cm|0+ ①



MM051 35cm|0+ ②



MM054 34cm|0+ ②



MM053 35cm|0+ ①



MM579 39cm|0+ ②



MM555 33cm|0+ ③



MM570 34cm|0+ ③



MM564 34cm|0+ ①



MM569 35cm|0+ ②



MM558 35cm|0+ ③



MM572 33cm|0+ ①



MM568 35cm|0+ ①



MM578 32cm|0+ ③



MM052 35cm|0+ ②



MM576 35cm|0+ ③



MM556 33cm|0+ ③



MM556 33cm|0+ ③



MM556 33cm|0+ ③



MM561 33cm|0+ ③





# festive friends



MM560  
34cm|0+ ①



MM563  
33cm|0+ ②



MM573  
35cm|0+ ③



MM567  
35cm|0+ ①



MM566  
33cm|0+ ①



MM060  
REINDEER  
22cm|0+



MM060  
PENGUIN  
24cm|0+

# COMFORTERS & BLANKETS



MM019  
32 x 35cm | 0+

EMBROIDERY ACCESS



MM020  
30 x 30cm | 0+

EMBROIDERY ACCESS



MM701  
29 x 29cm | 0+

EMBROIDERY ACCESS



MM751  
77 X 77cm | 0+

EMBROIDERY ACCESS



MM751  
77 X 77cm | 0+

EMBROIDERY ACCESS



MM700  
29 x 29cm | 0+

EMBROIDERY ACCESS



MM700  
29 x 29cm | 0+

EMBROIDERY ACCESS



MM034  
40cm | 0+  
BLANKET: 90 X 75cm



MM606  
40cm | 0+  
BLANKET: 90 X 75cm



MM606  
40cm | 0+  
BLANKET: 90 X 75cm

MM019, MM700 + MM020





## TRADITIONAL BEARS



MM001  
S 20.5cm | M 30.5cm | L 40.5cm  
0+



MM003  
M 33cm  
0+



MM016  
S 20.5cm | M 30.5cm  
0+



MM018  
M 36cm  
0+



MM033  
M 22cm  
0+



MM021  
M 28cm | L 33cm  
0+



MM030  
S 20cm | M 30cm  
0+



MM024  
XXXL 90cm  
0+



MM032  
S 19cm | M 26cm | L 33cm  
0+



MM035  
M 33cm  
0+

## ACCESSORIES



MM605  
HOT WATER BOTTLE COVER  
43cm | 0+

EMBROIDERY ACCESS



MM607  
HOT WATER BOTTLE COVER  
42cm | 0+

EMBROIDERY ACCESS



MM600  
CUSHION  
47 x 30cm | 0+

EMBROIDERY ACCESS



MM601  
CUSHION  
47 x 30cm | 0+

EMBROIDERY ACCESS



MM023 BINX BUNNY  
KEYRING  
14cm | +36 months



MM023 BINX TEDDY  
KEYRING  
10cm | +36 months

## CLOTHING

\* BEAR NOT INCLUDED



MM083  
TEDDY JUMPER  
+36 months

NAVY	CREAM	WHITE
M L	M L	S M L
B.BLUE	B.PINK	
M	M	



MM071  
TEDDY T-SHIRT  
+36 months

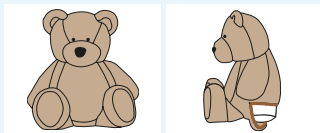
BLACK	NAVY	ROYAL	B.BLUE	WHITE
S M	S M L	S M	M	S M L
BOTTLE	FUCHSIA	RED	B.PINK	SUB WHT
M	S M L	S M L	M	S M L



MM088  
TEDDY HOODIE  
+36 months

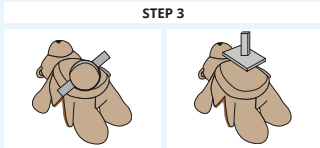
NAVY	FUCHSIA	RED
M L	M L	M L

## DECORATING TIPS



**STEP 1**  
CHOOSE YOUR ZIPPIE

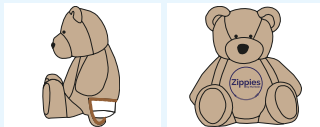
**STEP 2**  
UNZIP AND REMOVE THE STUFFING



**STEP 3**

FRAME UP

PLATE UP



**STEP 4**  
RETURN THE INNER STUFFING

**STEP 5**  
ENJOY



### EMBROIDER ME

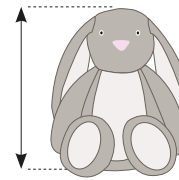
1. EMBROIDERY works on all Zippies with a professional finish.
2. Frame size 15-18cm will fit most of our Zippies. Square or circular will suit.
3. Use a sheet of backing underneath the animal to stabilise the fur.
4. Use a sheet of aquafil on top of the animal to let your stitches stay proud and not sink into the fur.
5. Make sure your Zippie is positioned straight, a laser needle will help. Alternatively, mark up a piece of a tape with a + to line up and remove before sewing.

### PRINT ME

1. **SUBLIMATION PRINTING** works on all Zippies with a light coloured tummy.
  2. Place protection paper on top of the design to protect the fur. In addition, place a piece of suitable fabric over the animal to avoid the pile flattening.
  3. Heat the press to 185°C and press for 60 seconds, if you are using additional fabric to protect the pile, press for 90 seconds as the fabric will absorb the heat.
1. **VINYL PRINTING** works on all Zippies, a vinyl with a thicker adhesive e.g a flock or glitter has the best results.
  2. Place protection paper on top of the design to protect the fur. In addition, place a piece of suitable fabric over the animal to avoid the pile flattening.
  3. Heat the press to 185°C and press for 15 seconds, if you are using additional fabric to protect the pile, press for 30 seconds as the fabric will absorb the heat.

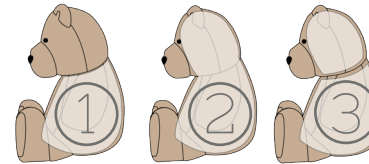
## SIZES

ALL SIZES IN CMS



Soft toys are measured from the head to the bottom in seated position.

Zippie stuffings are now manufactured shrink wrapped for ease of storing and have 3 different variations depending on the design of the toy, each style is listed with the relevant code.



1 PAD, ONLY BODY STUFFING, HEAD IS FIXED

1 PAD, BODY AND HEAD STUFFING

2 PAD, SEPARATE BODY AND HEAD STUFFING

	S	M	L	AGE	PADS
MM060 WHITE TEDDY		24		0+	
MM060 PINK TEDDY		24		0+	
MM060 BLUE TEDDY		24		0+	
MM060 HIGHLAND COW		23		0+	
MM060 KOALA BEAR		26		0+	
MM060 KANGAROO		23		0+	
MM060 LAMB		23		0+	
MM060 SLOTH		23		0+	
MM060 COW		21		0+	
MM060 DRAGON		23		0+	
MM060 ORANGUTAN		21		0+	
MM060 DOG		22		0+	
MM060 PINK BUNNY		22		0+	
MM060 BLUE BUNNY		22		0+	
MM061 POLAR BEAR		22		0+	
MM550 GIANT BUNNY			65	0+	1
MM555 RAINBOW BEAR			33	0+	3
MM556 BABY BEAR			33	0+	3
MM558 ELEPHANT			35	0+	3
MM560 REINDEER			34	0+	1
MM561 ANGEL			33	0+	3
MM563 FATHER CHRISTMAS			33	0+	2
MM564 GIRAFFE			34	0+	1
MM565 HIGHLAND COW			33	0+	2
MM566 PENGUIN			33	0+	1
MM567 SNOWMAN			35	0+	1
MM568 FOX			35	0+	1
MM569 LION			35	0+	2
MM570 UNICORN			34	0+	3
MM572 SLOTH			33	0+	1
MM573 CHRISTMAS BEAR			35	0+	3
MM574 KOALA BEAR			33	0+	2
MM575 KANGAROO			35	0+	1
MM576 LAMB			35	0+	3
MM578 COW			32	0+	3
MM579 DRAGON			39	0+	2
MM580 ORANGUTAN			33	0+	2
MM600 LAMB CUSHION		47 x 30		0+	
MM601 BEAR CUSHION		47 x 30		0+	
MM605 UNICORN COVER			43	0+	
MM606 HIPPO		40		0+	
MM607 GIRAFFE COVER			42	0+	
MM700 ANIMAL COMFORTER			29 x 29	0+	
MM701 BABY COMFORTER			29 x 29	0+	
MM751 ANIMAL BLANKET			77 x 77	0+	

### SUBLIMATE ME

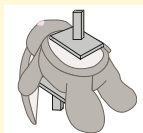
1. **SUBLIMATION PRINTING** works on all of the MM060 PRINTME styles.
2. Once the design has been printed, tear around the edges of the sublimation paper to avoid impressions being made on the fur.
3. Place protection paper on top of the design to protect the fur. In addition, place a piece of suitable fabric over the animal to avoid the pile flattening.
4. Heat the press to 185°C and press for 60 seconds, if you are using additional fabric to protect the pile, press for 90 seconds as the fabric will absorb the heat.
5. Remove the protection and peel off the sublimation paper to reveal the design.

### PRINT ME

1. **VINYL PRINTING** works on all of the MM060 PRINTME styles, a vinyl with a thicker adhesive e.g a flock or glitter has the best results.
2. Place protection paper on top of the design to protect the fur. In addition, place a piece of suitable fabric over the animal to avoid the pile flattening.
3. Heat the press to 185°C and press for 15 seconds, if you are using additional fabric to protect the pile, press for 30 seconds as the fabric will absorb the heat.
4. Peel off the vinyl backing and return the protection paper before re-pressing for a further 15 seconds to seal the design.



**STEP 1**  
CHOOSE YOUR PRINTME



**STEP 2**  
PLATE UP



**STEP 3**  
ENJOY

	S	M	L	AGE	PADS
MM001 BRACKEN BEAR	20.5	30.5	40.5	0+	
MM003 BRUMBLE BEAR	22	33		0+	
MM016 JOINTED BEAR	20.5	30.5		0+	
MM018 RABBIT		36		0+	
MM019 LAMB COMFORTER		35 x 32		0+	
MM020 MONKEY COMFORTER		30 x 30		0+	
MM021 HONEY BEAR		28	33	0+	
MM023 BUNNY	14			+36 m	
MM023 TEDDY	10			+36 m	
MM024 SUPER HONEY BEAR			90	0+	
MM030 BEAR IN A T-SHIRT	20	30		0+	
MM032 VELVET BEAR	19	26	33	0+	
MM033 REINDEER		22		0+	
MM034 RABBIT BLANKET		40		0+	
MM035 OLIVER BEAR		33		0+	
MM050 BUNNY			34.5	0+	1
MM051 TEDDY			35	0+	2
MM052 DOG			35	0+	2
MM053 DINOSAUR			35	0+	1
MM054 OWL			34	0+	2
MM060 GREY BUNNY		22		0+	
MM060 WHITE BUNNY		22		0+	
MM060 CAT		22		0+	
MM060 ELEPHANT		22		0+	
MM060 GIRAFFE		22		0+	
MM060 LION		22		0+	
MM060 OWL		24		0+	
MM060 PENGUIN		24		0+	
MM060 RAINBOW BEAR		24		0+	
MM060 UNICORN		22		0+	
MM060 REINDEER		22		0+	
MM060 TEDDY		22		0+	







[the-mumbles.co.uk](http://the-mumbles.co.uk)